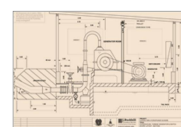
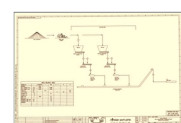
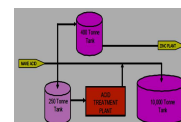


MAJOR PROJECTS

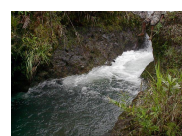
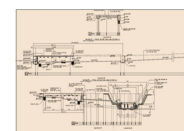
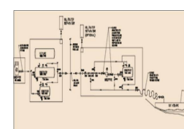
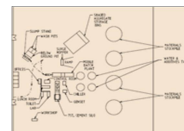
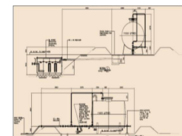
The Principal and founder Jack Khallahle has completed many major projects at various sites throughout Australia and PNG as a project leader or project manager from concept design to practical implementation and commissioning. Jack also conducted successful pre-feasibility and feasibility studies.

The following major projects have been completed meeting clients requirements:

- **Mineral Sand Separation Plant Project**
Parsons Brinckerhoff for Bemax Resources Ltd, Broken Hill, NSW.
Capital cost, approximately \$29,000,000.
Design, Construction & Commissioned
- **10,000 Tonne Acid Storage Tank, Pump & Pipelines Replacement**
WorleyParsons Services for Nyrstar WorleyParsons Project Alliance, Port Pirie, SA. Capital cost approximately \$1,500,000.
Design, Construction & Commissioned
- **Neutral A Cooling Tower Refurbishment Project**
WorleyParsons Services for Nyrstar WorleyParsons Project Alliance, Port Pirie, SA. Capital cost approximately \$1,500,000
Design, Construction & Commissioned
- **Mercury Removal Plant for the Sulphuric Acid Plant**
WorleyParsons Services for Nyrstar WorleyParsons Project Alliance, Port Pirie, SA. Capital cost, approximately \$4,500,000
Feasibility study
- **Coal Mill Baghouse Insulation Project**
WorleyParsons Services for Nyrstar WorleyParsons Project Alliance, Port Pirie, SA. Capital cost approximately \$450,000
Design, construction & Commissioned
- **Coal Feed System using Bottom Bin Feed Screw Conveyors**
WorleyParsons Services for Nyrstar WorleyParsons Project Alliance, Port Pirie, SA. Capital cost approximately \$2,900,000
Pre-feasibility study
- **250 kW Karimui Mini Hydropower Scheme-Pre feasibility study**
Department of Simbu, Kundiawa, PNG
Approximately \$2,500,000
Pre-feasibility study
- **120 Person Karara Exploration Camp**
WorleyParsons Services for Gindalbie Metals, Perth, WA
Approximately \$3,000,000
Designed, Construction & Commissioned



- **Construction Fuel Supply, Storage, Distribution Facility**
WorleyParsons Services for Gindalbie Metals, Perth, WA
Approximately \$2,000,000
Designed, Construction & Commissioned
- **Mobile Concrete Batch Plant for Karara Iron Ore Project**
WorleyParsons Services for Gindalbie Metals, Perth, WA
Approximately \$13,000,000
Designed, Construction & Commissioned
- **Paraburdoo CV25 Train Load-out Take-up System modification**
RIO Tinto, Pilbara Iron, Paraburdoo, WA
Approximately \$860,000
Designed, Construction & Commissioned
- **Paraburdoo CV604/555 Transfer Station Silt Trap & Slurry Pumps**
RIO Tinto, Pilbara Iron, Paraburdoo, WA
Approximately \$400,000
Designed, Construction & Commissioned
- **2.2 Km Eastern Range Mine Excess Road for Light Vehicle**
RIO Tinto, Pilbara Iron, Paraburdoo, WA
Approximately \$2,300, 000
Designed, Construction & Commissioned
- **Paraburdoo Gas Turbine Fuel Line Transfer Project**
RIO Tinto, Pilbara Iron, Paraburdoo, WA
Approximately \$770, 000
Designed, Construction & Commissioned
- **Bige-West Bank Fuel Distribution Facility for Dredging Operation**
Ok Tedi Mining Limited, Bige, PNG
Approximately \$360,000
Designed, Construction & Commissioned
- **Mill/ Mine Process and Potable Supply and Treatment Water Plant**
Ok Tedi Mining Limited, Mine Site, PNG
Approximately \$2,000, 000
Designed, Construction & Commissioned
- **Tabubil Thermal Power Plant Water, Sediment Separation System**
Ok Tedi Mining Limited, Tabubil, PNG
Approximately \$250, 000
Designed, Construction & Commissioned
- **13 kW Tari Micro Hydropower Scheme**
PlacerDome (Barrick Gold)-Porgera Joint Venture (PJV), Tari, PNG
Approximately \$250,000
Pre-feasibility Study



- **Elcom Haus Hohola – Air-conditioning & Mechanical Services**

PNG ELCOM, Port Moresby, PNG
Approximately \$150,000
Designed, Construction & Commissioned



- **Port Moresby General Hospital–A/C & Mechanical Services**

Department of Works, 3 Mile-Port Moresby, PNG
Capital cost of project approximately \$500, 000
Designed, Construction & Commissioned



- **Credit Corporation Building– A/C & Mechanical Services Design**

Credit Corporation of PNG, Port Moresby CBD, PNG
Approximately \$800, 000
Designed, Construction & Commissioned

